

The Countryside Local Access Forum

(statutory body)

The CLAF that represents Caversham is the Mid and West Berkshire, Wokingham and Reading one. Pictured here, it went for a walk on the Hemdean Bottom site to appreciate the border links with South Oxfordshire.

When there are plans to change, add or remove Rights of Way, they get consulted and involved.

Representation is made by horse riders, walkers, disabled, landowners and other users.



Discovering Lost Ways

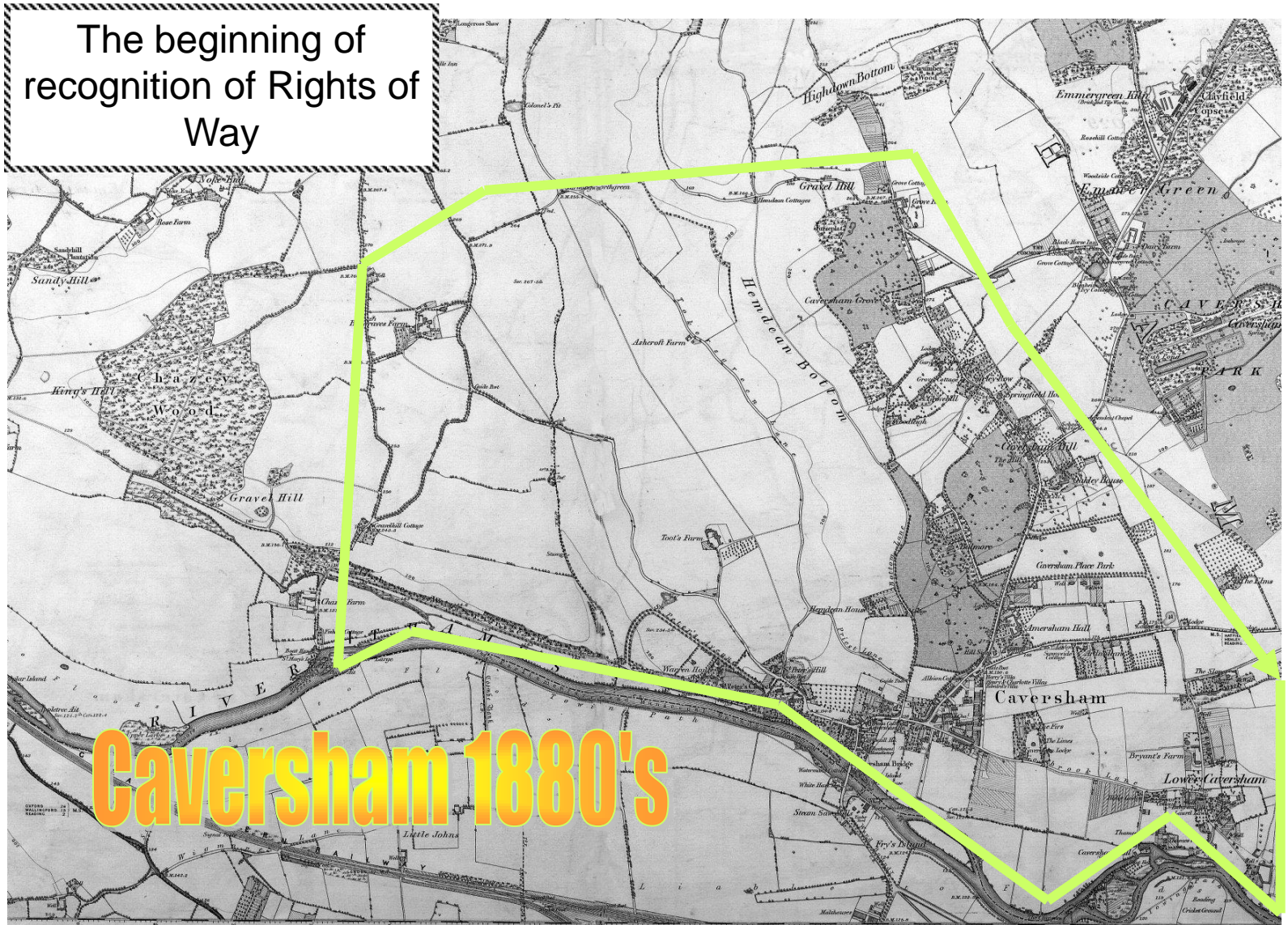
The access forum was invited in 2006 by the Countryside Commission to undertake investigations to uncover “lost way” in an aim to mark them onto the Definitive Map. This then gave paths that had been left to get overgrown and unpassable a chance for a proper review.

Researchers up and down the country went to records offices to consult with the early maps and this then became a walk back in history; tracing land ownership changes and access routes between farms and estate lands.

Caversham expanded rapidly from 1880 on and the building of Caversham Heights made a noticeable difference to the road structure of the village; houses and new roads were built but country paths disappeared.

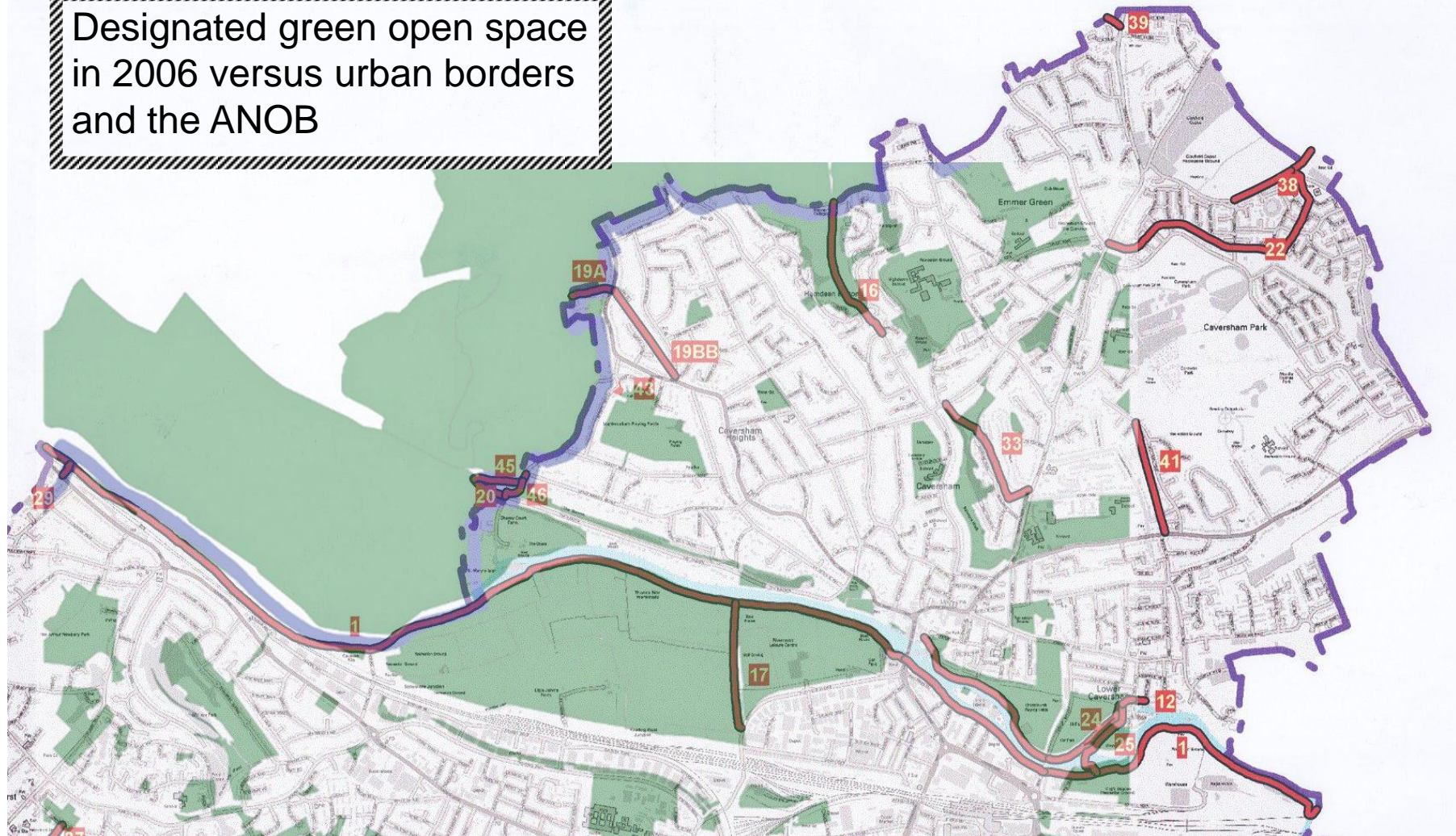
Some local authorities, such as Oxfordshire have made great progress in establishing new mapping systems of these paths and greatly encourage walkers etc to use them.

The beginning of
recognition of Rights of
Way

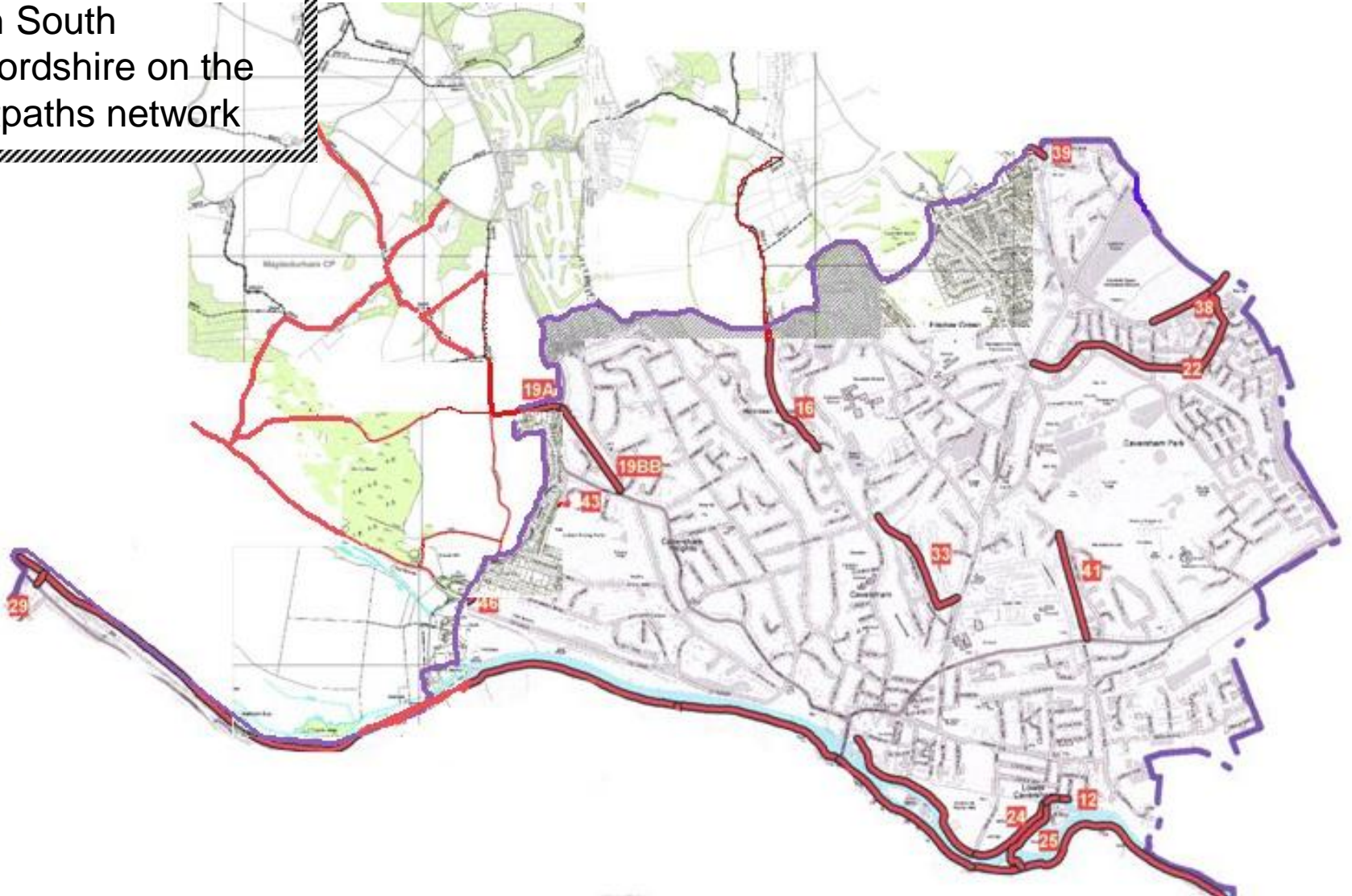


Caversham 1880's

Designated green open space
in 2006 versus urban borders
and the ANOB



Caversham Links
with South
Oxfordshire on the
footpaths network



- For further info for Reading, Wokingham and West Berks contact:

- Roger Penfold, Secretary to the LAF
Mid & West Berkshire Local Access Forum
- Roger.Penfold@reading.gov.uk
Secretary's phone no: 0118 939 0444

- For further info for Oxfordshire please follow their web link:

- <http://www.oxfordshire.gov.uk/cms/public-site/countryside-access-forum>
- paul.harris@oxfordshire.gov.uk
Secretary's phone no: 01865 810206

Thanks for reading...!!

Presented by Robert O'Neill, Rep, 2011 for Reading.

Thanks to the local authorities for permission to reproduce the maps.