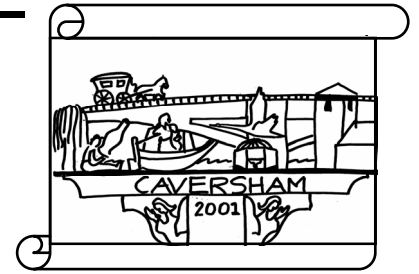


CADRA news

Caversham And District Residents' Association

The voice of Caversham for 40 years



Volume 10, Issue 2, October 2010

www.cadra.org.uk

Reading and the Railway

The upgrading of Reading Station was always expected to be a substantial project and is scheduled from 2010 to 2016. It includes new platforms, a new station building and a viaduct to untangle the track outside the station which will help increase capacity and reduce delays.

Major works are now under way including railway track changes and widening of rail bridges. Work over Christmas will require closure of the lines for a number of days as well as a temporary closure of Caversham Road. Widening the bridges over Caversham Road and Vastern Road to provide an addition line, may take until April 2011.

Planning applications for Cow Lane bridge changes have been submitted and these too will involve road closures.

The new train depot and sidings will be developed on a strip of land running

'...how Brunel brought the railway line through Reading.....'

from behind the fire station through to Cow Lane. Planning permission has been granted for a maintenance depot on



Picture courtesy of Network Rail

Napier Road, adjacent to the rail tracks.

We understand the final design of the station buildings, particularly on the northern side is partly dependent on additional funding which is waiting on a decision by the Department of Transport.

Changes to the bus interchange and access around the station have generated a lot of interest. CADRA made representations to the Council which resulted in meetings with Officers and

with Cllr Willis. More details are on page 3 inside and we hope to have information available at the Open Meeting on 2 November. At the meeting, the Network Rail team will set out the details of the overall station scheme and the implications for local people over the next six years as work progresses.

Peter Lugg, is a lifelong railway man who worked through from engine cleaner to manager at British Rail HQ. He is a well known raconteur with a particular interest in Isambard Kingdom Brunel and will recount how Brunel brought the railway line through Reading and on to Bristol.

The evening will combine historical interest with an update from Network Rail Senior Managers responsible for the station upgrade. We look forward to seeing you. Friends and neighbours are welcome too.

With funding cuts and the abolition of regional bodies, the next few months will be a turbulent time for public services. Local Authorities will have new responsibilities and fewer resources but we are promised greater transparency.

Helen Lambert

Open Meeting

7.45pm, Tuesday 2 November 2010
Baptist Church, Prospect St

Trains through Reading
1835 to 2016

Peter Lugg, Great Western Society
followed by
Network Rail

Tony Walker, Senior Scheme Sponsor
Steve Green, Project Manager
Gareth Nicholson, Communications Manager

Neighbourhood Action Groups

Both NAG groups are now running, attended by the Caversham Neighbourhood Police and some local councillors.

Upper Caversham NAG

A Chairman has been appointed and the first three meetings were fairly well attended. Following the surveys and public meetings, the main focus will be on speeding and burglaries. Roads which appear to give the most speeding concern have been identified and households there have been approached with a questionnaire to gauge the level of concern. It is the intention to carry out speed checks with hand-held cameras to confirm where speed limits are being breached.

Lower Caversham NAG;

This well established group continues with their existing Chairman and Secretary. A public meeting was held on 10 June 2010, attended by 48 people including three Councillors and the local police. Based on a house to house survey and views expressed at the meeting, the top ten categories of issues were identified which included burglary and road traffic offences. This group will also concentrate its efforts on speeding and burglary.

CADRA was pleased to see the improved speed reduction signs on the Caversham border on both Henley Road and Woodcote Road which had been campaigned for by the NAGs.

Caversham has the lowest crime figures in Reading and year-to-year recorded

crime is down around 12%. Crime reports are critical to the work of the NAGs and the Neighbourhood Police Team so please do report all crime. Further information is on the NAG website at www.uknags.org.uk. If your area is not covered by a Neighbourhood Watch Scheme, you can contact Liz Herbert (see back page) or at liz.herbert@thamesvalley.pnn.police.uk.

Lower Caversham's newly launched **Flood Awareness group** continues to grow, helping people get all the information on protecting their property and vehicles when flooding threatens their area.

The **Surf & Turf project** at has brought together local 50+ keen gardeners with young people under 25 to share gardening and IT skills and knowledge.

Mapledurham Playing Fields and Pavilion

A community orchard of eighty fruit trees has been planted on the sloping ground in the south-east of the site, funded by a pharmaceuticals company. A consultation of residents living adjacent to the playing fields showed considerable support but a meeting of the Mapledurham Playing Fields Management Committee expressed real concerns as the future husbandry of the orchard will depend on volunteers. We hope that this proves a real asset for the community to enjoy.

Festival Republic who run the Reading Festival expressed an interest in providing some financial support for the pavilion but following a survey said they were not prepared to put money into the current pavilion which is regarded as life-expired. It is hoped that they would be prepared to offer some financial support for

any replacement building in the future.

Officers from Reading Borough Council continue to work on the options for the future of the pavilion and have presented the Management Committee with plans for a replacement prefabricated but permanent modular structure building estimated to cost £450,000. This could be built in stages and would provide modern facilities for football and tennis with a meeting/function room.

In the present economic climate funding remains a real problem and the Management Committee is receiving advice from Officers on potential external funding sources. We wish all those involved every success in finding a solution for the pavilion.

Open Spaces

Christchurch Meadows

A recent consultation sought local views on how the meadows should be managed over the next five years. No changes are intended to the current sports use of the site. The main proposals relate to tree cover, improving the entrances, a better pedestrian commuter route, enlarging the play area and creating other opportunities for play and managing more of the marginal grass areas as wildflower meadow. The Caversham Laundry building on the corner of the meadows, is

affected by the redrawing of the flood map and it now seems unlikely that planning permission would be granted for residential purposes.

Kings Meadow Pool

Fundraising is underway for Phase 1 to build a pavilion with new sports changing facilities for the meadow, meeting rooms, function rooms and a restaurant. Phase 2 includes preservation and restoration of the Edwardian open air baths for summer swimming, and in winter an exhibition

centre or for private hire. More information at www.kingsmeadowbaths.org.uk

View Island

The Waterways Trust has allocated £86,000 for 37 projects along the River Thames. This includes funds for View Island restoration which will allow the river banks to be restored and the creak and pond cleared.

Caversham Good Neighbours

Could you give a little time each month to this longstanding local service looking for drivers, people to man the telephone in Church House, or people prepared to spend some time on a fairly regular basis with a few housebound people? Training is

provided and expenses reimbursed.

For more information, see the CADRA website or call the Caversham Good Neighbours office on 948 3466.

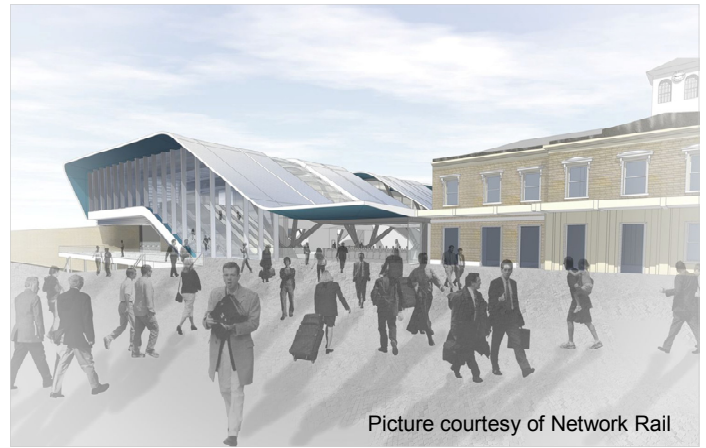
Transport

Local Transport Plan

The next Reading Local Transport Plan (LTP3) to cover the years 2011 –2026 is out for consultation. For Northern Reading it highlights: the river as a transport asset, cross-boundary solutions with Oxfordshire, Park&Ride, Mass Rapid Transport System, review of key bus corridors including those over the bridges, targeted local schemes and enhanced walking and cycling routes connecting to a proposed pedestrian and cycle bridge. In Central Reading, a low emission zone is proposed as HGVs are identified as the primary source of exceeding air quality targets. There is no detail on how these would be achieved and, unsurprisingly, some references to financial uncertainty. No firm proposals are shown for a third Thames Bridge. See www.reading.gov.uk— Consultations 2010. Send your comments to RBC and let us know your views to help us in our response. The closing date is 12 November 2010.

Station Interchange

From our meetings with the Head of Transport and the CEO, Reading Buses, we learned that the proposals include opening the subway under the station for public use, creating a new walking route from Vastern Road to Station Road. This will replace the existing route over the bridge. The present bus stop area will become pedestrian only - see pictures. Bus stops will be spread around the Station Road and Friar Street area with taxis and disabled access mainly via Tudor Road. An improved northern access is to be provided off Vastern Road. All



Caversham buses will approach from Reading Bridge or Vastern Road and will stop at both the northern and southern access.

CADRA expressed concern over ease of use, security at night, cycle routes through town and adequate short term parking. We also urged availability of plans via the RBC website.

Bus routes

£1 discounted fares between Caversham Library and Central Reading have seen a marked increase in journeys. This follows experience with the 27/29 routes to and from Lower Caversham, where the maximum fare is £1.

Planning

The new Government changes are taking time to work through and the current picture is unclear. Planning Policy Statement 3: Housing was issued on 9 June 2010. This can be found at www.cadra.org.uk/planning.asp. This policy confirms that Local Authorities should continue to develop their Local Development Framework. We have just heard from RBC that the *Sites and*

Detailed Policies Document will be reviewed in the light of changing national policy (including revocation of the South East Plan) and will be considered by the Council early in 2011. If significant changes are proposed, a further consultation will be held.

The decision that back gardens should no longer be classified as 'Brownfield' land

is important for Caversham. However we are advised that it is not in itself sufficient grounds for refusal. RBC may include a local policy on this within the SDPD. The application on Upper Warren Avenue has been influenced by this issue. The Planning Applications Committee were "minded to refuse" the latest application but this has still to be confirmed.

Caversham Centre

Caversham Traders have been busy over the summer and three shops received awards. The Blue Duck won 'Service with a Smile' and Delicious won 'My favourite coffee shop'. The House of Cards won 'Best Greeting Card Retail Initiative for its 20th Anniversary promotions. The Beachcombers competition in the school holidays culminated in a presentation by the Mayor in Caversham Court. A Christmas competition is also planned, based on the 12 Days of Christmas, with prizes of a Christmas hamper, turkey and pantomime tickets.

In St Martin's precinct, the tarmac area replacing some of the worst paving slabs is safer though unsightly. A planning application to reduce the size of the three trees is being considered and a number of traders met recently with local Councillors and the managing agents to push forward improvements.

Look out for the new website, www.ChooseCaversham.org.uk which is building up a wide range of information on the Centre.

Reading Festival

In previous years, the last night of the Festival has seen increasing problems on site and fires have caused objectionable smells across the river. At the briefing and the tour of the site before the festival and CADRA were pleased to hear about the increased security in place and the

complete ban on fires from 8pm Sunday. Feedback to date has been positive. Council workers kept Caversham tidy, and the installation of several rubbish collection points, near Caversham Bridge, worked well. We are pleased to know that our encouragement to Festival

Republic to make a contribution to the local community has been followed by a donation to the Sea Scouts rebuilding fund. A debriefing meeting is planned for early December. Comments welcome to: info@cadra.org.uk.

Can you help?

We are looking for three new people to work with CADRA:

IT Committee Member

Are you computer literate? Could you help to manage and enhance CADRA's IT usage? Are you competent with various PC packages for email, newsletter production and website content management?

Website updating.

Would you like to help CADRA with their web site? The software is very easy to use, and after training you could help

update the site, and make sure it is relevant and up to date.

Local History

Are you interested in the history of Caversham? We would like to have someone working with the committee to gather historical information and make it available to the Caversham community.

If you could handle **any** of these things and are willing to spend a few hours a month helping us, we would love to hear from you. Email Helen.Lambert@cadra.org.uk or call Helen on 947 3165.

About CADRA

The Committee

Chairman: Helen Lambert,
5 Derby Road, RG4 5HE Tel: 947 3165
Treasurer: Stewart Bolton
11 Graveney Drive, RG4 7EG Tel: 948 2687
Secretary: Linda Watsham
159 Kidmore Road, RG4 7NJ Tel: 947 8744
Website: Clair Drever, Rotherfield Way
Voluntary Liaison: James Frost, Gurney Drive
Licensing & NAG Lower Caversham:
Mike Gilbert, Notley Place
Footpaths & Traffic: John Lee, Hemdean Road
Link to Committee Support & Newsletter:
Ruth Perkins, Woodcote Road
NAG Upper Caversham: Les James, Wincroft Rd
Safer Caversham: John Roach, St. Peter's Ave
Planning: Jennifer Millest, Mill Green
Planning Research: Mo Prins, Haldane Road
Membership: Jacque Tomson,
121 Upper Woodcote Rd, RG4 7LB

Committee Support

Planning Research: Liz Killick, Upper Woodcote Road
Local Correspondent: John Mullaney, Derby Road
Informal Links: Jo Munday, South View Avenue

Contacting CADRA

Please write to the Secretary or better still, email us at: info@cadra.org.uk

Our aim is to:

"preserve and enhance the quality of life in Caversham and the surrounding District"

We follow planned changes relevant to Caversham and look for opportunities to improve or protect our shared environment. We avoid party political bias, working closely with Reading Councillors and Officers, other local groups, the Police, companies and individuals.

We issue two newsletters a year, hold two public meetings, write columns for the Caversham Bridge local newspaper and maintain a website with a wide range of information on local and current issues.

Membership

Membership of CADRA is just £3 per year per household. Membership leaflets are available in Caversham Library, 'Delicious' and 'Wordplay' in Prospect St. or from the Membership Secretary, tel. 0118 9476984. The stronger our voice, the more impact we can have on local decisions. Please encourage your friends and neighbours to join!

Useful Information

Ward Councillors

Contact via: 0118 939 0287
Mapledurham
Fred Pugh

Caversham

Andrew Cumpsty
Dave Luckett
Tom Stanway

Peppard

Jamie Chowdhary
Mark Ralph
Richard Willis

Thames

Isobelle Ballsdon
Jeanette Skeats
David Stevens

Caversham Neighbourhood Police

Inspector Penny Mackenzie, Sergeant Rob Pitman and PC Tristan 'Buzz' Kherzaden
Neighbourhood Support Officers: Debbie Smith -Lower Caversham,
Campbell Montgomery—CPV and Emmer Green
Michelle Clements—Caversham Heights
PCSOs : Layla Potter, Karen Vaughan and John Hendy

Caversham Police Office in Church House: 0118 9474269 - use answer phone.
Neighbourhood Watch Co-ordinator, Liz Herbert: 0118 953 6250
Crime Reduction Officer, John McNicholas: 0118 953 6171

To report crime, suspicious incidents or contact individual officers: 0845 8 505 505
or email: police@thamesvalley.pnn.police.uk

In an emergency or if a crime is being committed call 999
www.thamesvalley.police.uk

Reading Borough Council

Switchboard 0118 939 0900

Call Centre for Refuse Collection, 0800 834 035
Graffiti Removal,

Call Centre for Planning Permission 0800 626 540
& Enquiries, Licensing, Road Safety,
Noise Nuisance, Environmental
Health.

Anti-social Behaviour hotline 0845 605 2222

www.reading.gov.uk , gives information on a wide range of
issues including planning applications.
Links to specific parts of the Council web-site can be
found on the CADRA website: www.cadra.org.uk.